

# The RETURN of the WOYLIES

## 20th ANNIVERSARY EVENT



Western Australian Rogaining Association.  
PO Box 1201 Subiaco.  
WA 6904

wa.rogaine.asn.au

WARA 24 HOUR ROGAINE - 12 & 13th August 2000

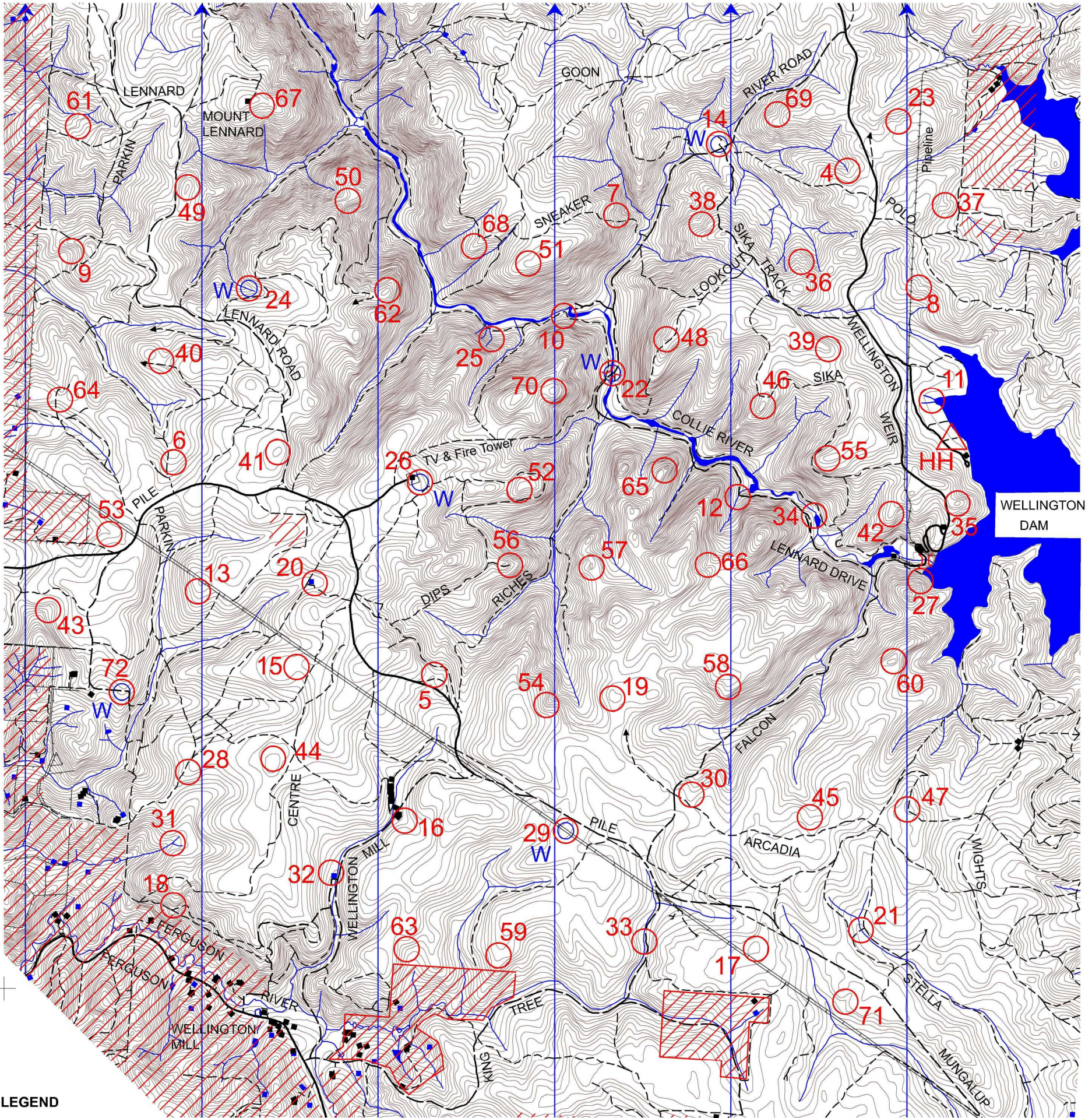
INCORPORATING THE PADDY PALLIN 6 HOUR SCHOOLS CHAMPIONSHIPS

### SETTERS

Bob McCreddin  
Penny Dufty  
Phil Dufty

### VETTERS

Mal Dennett  
Craig Dermer  
Geoff Cocks  
Marianne Cowie



### LEGEND

- Powerline
- Pipeline
- Building
- Contours
- Dams
- Fence Line
- Magnetic North Line
- Watercourse
- Road - Bitumen
- Road - Major Gravel
- Road or Track - Minor (May be overgrown or non-existent)
- Road or Track continues

- Control
- Hash House
- Water Drop
- Out of Bounds

Collie River Crossing Point

The Collie River may only be crossed at the marked crossing points.

SCALE 1:50,000, 5 metre contour interval



This map was produced using OCAD. Data supplied by DOLA and used under copy licence 393/93. Possession of this map does not give right of entry to this area.

### SPECIAL THANKS TO

Department of CALM, Mornington, for land access permission, Hash House site, and assistance with event planning.  
Brian Wansbrough of Wansbrough Wines for access to land.

Potters.290700



## The Return of the Woylies. 24 Hour Rogaine, 12 & 13 August 2000

No.	Description	Points	No.	Description	Points	Important information
			37	The spur. On a rocky knoll.	60	<b>Control Cards</b> From 1115 Sat.
			38	The gully. On the N edge of a 20 m by 20 m rock surface.	60	
			39	The spur.	60	
4	The gully. At the head of the watercourse..	30	40	The saddle.	60	
5	A saddle.	30	41	The summit. On the W side of a 40 m by 40 m thicket.	60	
6	The broad gully. On a distinct E-W track.	30	42	The spur. On a knoll.	60	
						<b>Briefing</b> 1130 Sat.
						<b>Start</b> Noon Sat.
7	North end of a 70 m by 70 m clearing	40	43	The gully.	60	<b>Finish</b> Noon Sun.
8	The spur.	40	44	The broad summit.	60	
9	The broad gully.	40	45	The shallow gully. On an indistinct watercourse.	60	<b>School's Finish</b> 1800 Sat.
10	A knoll. WARNING - watch for holes concealed by leaves.	40	46	The knoll.	60	
11	Between the watercourses.	40	47	The knoll. On the W side of the track.	60	<b>Hash House</b> Open 1600 Sat. Closed 1300 Sun.
12	The watercourse. 10 m upstream from the road.	40	48	The spur. On the NW side of the track.	60	
						<b>All Night Café</b> Control 72 Open 1700 Sat. Closed 0800 Sun.
13	The spur.	40	49	The summit. At the N end.	70	
14	The track bend. Then 40 m at 310 degrees. WATER.	40	50	A saddle.	70	<b>Astronomical</b> Sunset Saturday 1744 Moonrise Saturday 1508 Moonset Sunday 0535 Sunrise Sunday 0655
15	A saddle.	40	51	The spur.	70	
16	The gully. On a watercourse.	40	52	The spur.	70	<b>Controls Used</b> 69
17	The knoll.	40	53	The gully.	70	
18	The spur.	40	54	The gully.	70	<b>Total Points</b> 4230
19	The broad knoll. On the S side of a thicket.	50	55	The knoll. At the W end.	80	
20	The dam. On the SE side.	50	56	The spur. At the end of the track.	80	
21	The track/watercourse crossing	50	57	The knoll.	80	
22	NE end of the Bridge. Under the bridge. WATER.	50	58	The spur.	80	
23	The shallow gully	50	59	The spur.	80	
24	The watercourse. On the W edge of a large clearing. WATER.	50	60	The broad summit. At the NE end.	80	
25	The eastern watercourse. At the bend.	50	61	The gully	90	
26	The fence corner. Then 40 m at 110 degrees. WATER	50	62	The summit. On an E knoll.	90	
27	The broad spur. At the top of a 4 m cliff.	50	63	The gully.	90	
28	The broad spur.	50	64	The saddle.	90	
29	A powerpole. Then 40 m N. WATER	50	65	The saddle.	90	
30	The gully.	50	66	The gully.	90	
31	The gully. At the watercourse junction.	50	67	The northern gully. In the NE part of a large clearing.	100	
32	The dam. On the NW side.	50	68	The spur. On a knoll.	100	
33	The watercourse. W side, NE corner of a 15 by 20 m clearing.	50	69	The gully. At the head of a watercourse.	100	
34	NW corner of the pool. On a foot track. SW side of Collie River.	50	70	The knoll.	100	
35	The knoll. On a W high point.	50	71	The gully. In a watercourse.	100	
36	The gully. At the head of a watercourse.	50	72	The spur. WATER. FOOD. SHELTER	100	

North Patrol. HH, Potters Gorge Rd, Wellington Weir Rd (south), Lennard Drive (west), control 22, River Rd (north), control 14 Wellington Weir Rd (south), Potters Gorge Rd, HH.

South Patrol. HH, Potters Gorge Rd, Wellington Weir Rd (south), Falcon Rd, Pile Rd (west), control 29, TV Tower Rd, control 26, Pile Rd (west), Lennard Rd, control 24, Pile Rd (west), control 72